



100bp DNA Ladder (QT200-1201)

Store at -20°C . Stable for at least 50 freeze-thaw cycles. Stable at 4°C for 30 days.

Size : 500 μL (for 100 lanes)

Supplied with 10 \times Loading Buffer 1 ml (Once opened, 10 \times Loading Buffer should be stored at room temperature.)

Description:

This ready-to-use marker consists of 10 fragments:

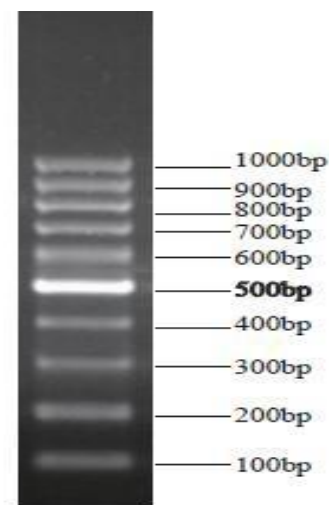
100bp, 200bp, 300bp, 400bp, **500bp**, 600bp, 700bp, 800bp, 900bp, 1000bp.

The approximate mass of DNA in each of the bands is $\sim 10\text{ng}/\mu\text{L}$, except for the 500bp band that has an increased intensity ($30\text{ng}/\mu\text{L}$) to serve as reference points. All are double-stranded DNA fragments.

Usage notes:

This ladder was not designed for precise quantification of DNA mass. It is intended for the estimation of DNA mass in comparable intense samples of similar size.

5 μL of 100bp DNA ladder is recommended for each lane.



100bp DNA Ladder visualized by ethidium bromide staining on a 1.5% TAE agarose gel.